

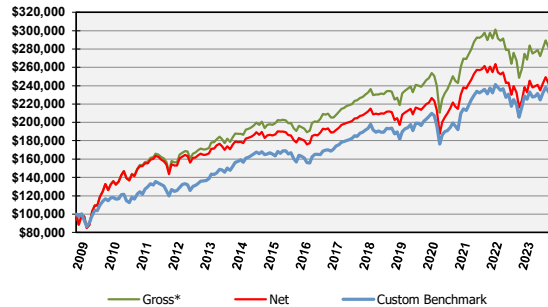
SignalPoint Asset Management, LLC is a SEC Registered Investment Advisory (RIA) firm established to focus on the needs of institutions and high net worth individuals. We offer customized portfolio management services allowing for a wide array of objectives whether the client is a pension fund, endowment, wealth manager or private investor.

Contact: Michael Orzel
Phone: (417) 869-9980
Email: morzel@signalpointinvest.com
1201 E. Walnut Street
Springfield, MO 65802

Composite Overview

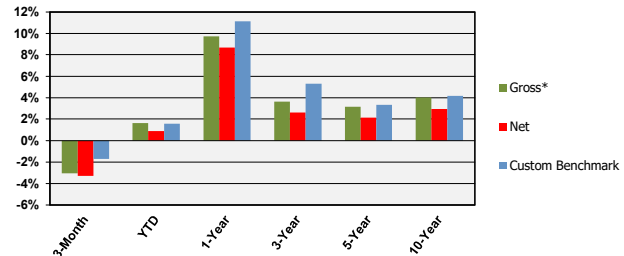
The Universal Signal Portfolio blends exposure to equity and fixed income ETFs along with SignalPoint's disciplined approach to managing risk. The result is an efficient strategy that seeks to provide global equity exposure based upon value-oriented ETFs, fixed income ETF's across several classifications, and a dynamic cash reserve. The portfolio is then managed with SignalPoint's disciplined process, which raises and lowers cash and ETF holdings incrementally in relation to market risk. Universal Signal has the objective of long-term growth and current income.

Growth of \$100,000 Since Inception (November 1, 2008)



*Supplemental pure gross returns are gross of transaction costs.

Trailing Returns through September 30, 2023



Returns greater than one year have been annualized.

Quarterly Historical Performance (Gross & Net)

Year	1st Qtr.		2nd Qtr.		3rd Qtr.		4th Qtr.		Year-To-Date Performance		
	Gross*	Net	Gross*	Net	Gross*	Net	Gross*	Net	Universal Signal	Net	Custom Benchmark
2023	3.15%	2.91%	1.63%	1.39%	(3.06%)	(3.29%)			1.63%	0.90%	1.57%
2022	(3.23%)	(3.47%)	(9.40%)	(9.62%)	(5.84%)	(6.06%)	7.96%	7.70%	(10.87%)	(11.73%)	(6.71%)
2021	3.89%	3.64%	4.29%	4.04%	(0.77%)	(1.02%)	3.93%	3.68%	11.74%	10.65%	12.46%
2020	(17.08%)	(17.28%)	12.21%	11.93%	3.83%	3.58%	9.93%	9.65%	6.20%	5.15%	2.16%
2019	8.03%	7.74%	1.78%	1.53%	0.70%	0.44%	4.71%	4.45%	15.94%	14.77%	15.58%
2018	(0.99%)	(1.25%)	0.29%	0.03%	1.14%	0.88%	(6.31%)	(6.56%)	(5.90%)	(6.89%)	(6.13%)
2017	3.67%	3.39%	1.98%	1.70%	3.02%	2.74%	2.67%	2.40%	11.83%	10.63%	11.08%
2016	3.09%	2.82%	2.32%	2.06%	2.72%	2.44%	(0.65%)	(0.92%)	7.64%	6.51%	8.16%
2015	2.45%	2.15%	(1.66%)	(1.93%)	(4.07%)	(4.33%)	1.34%	1.07%	(2.06%)	(3.14%)	(2.55%)
2014	2.89%	2.60%	3.46%	3.17%	(3.04%)	(3.33%)	1.87%	1.58%	5.14%	3.94%	3.78%
2013	5.46%	5.09%	(2.39%)	(2.72%)	3.55%	3.28%	2.11%	1.81%	8.85%	7.50%	14.83%
2012	7.78%	7.40%	(1.65%)	(2.00%)	3.43%	3.06%	0.49%	0.14%	10.17%	8.62%	10.44%
2011	3.27%	2.91%	0.15%	(0.21%)	(9.78%)	(10.10%)	6.93%	6.56%	(0.23%)	(1.62%)	(1.20%)
2010	4.93%	4.80%	(3.86%)	(3.98%)	9.00%	8.79%	4.90%	4.66%	15.34%	14.57%	7.57%
2009	(10.63%)	(10.63%)	24.41%	24.41%	21.20%	21.20%	2.37%	2.24%	37.95%	37.78%	17.94%
2008							(1.42%)	(1.42%)	(1.42%)	(1.42%)	0.22%

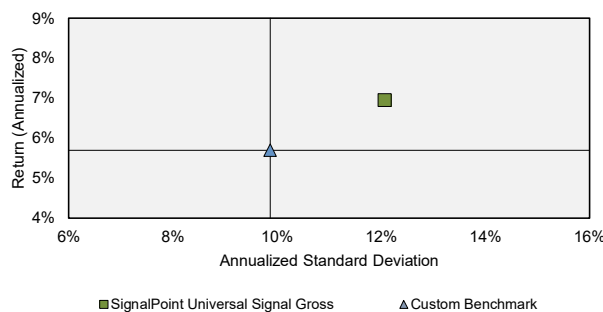
Key Statistics

	Gross	Custom Benchmark	Comparison to Custom Benchmark	
Annualized Return	6.96%	5.70%	R squared	0.78
Annualized Std Dev	12.06%	9.87%	Beta	1.08
Sharpe	0.55	0.53	Jensen Alpha	0.08%
Max Drawdown	(17.44%)	(15.99%)	Tracking Error	5.74%
Qtrs Max Drawdown	3.0	1.0	Information Ratio	0.22
Qtrs To Recover	N/A	3.0		

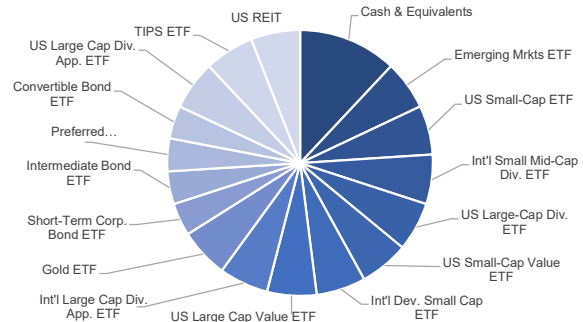
Period-to-Date Relative Performance

	Gross*	Net	Custom Benchmark
3-Month	(3.06%)	(3.29%)	(1.72%)
YTD	1.63%	0.90%	1.57%
1-Year	9.72%	8.68%	11.12%
3-Year	3.62%	2.62%	5.31%
5-Year	3.15%	2.14%	3.34%
10-Year	4.03%	2.95%	4.16%

Annualized Risk vs. Return



Sector Allocations as of September 30, 2023



SignalPoint Asset Management, LLC ("SignalPoint") is a SEC registered investment adviser. SignalPoint claims compliance with the Global Investment Performance Standards (GIPS®). A GIPS Report is available upon request using the contact information at the top-right of this report. Universal Signal Composite includes all equity portfolios that invest in at least a 90% target allocation to the Universal Signal model portfolio, a balanced portfolio comprised of ETFs representing domestic and international equities with a focus on dividends, fixed income diversified across several income sectors, precious metals and a cash reserves position. Portfolios typically have 10 different ETF holdings in addition to cash reserves. The Universal Signal Composite creation and inception date are November 1, 2008. Past performance is not indicative of future results. The U.S. Dollar is the currency used to express performance. Performance shown represents total returns that include income dividends, realized and unrealized gains and losses. Gross of Fee returns are presented before the deduction of management fees. Net of Fee performance returns are reduced by actual management fees and bundled fees, which include transaction expenses, for applicable portfolios. All dividends are allocated to the cash reserve in the respective portfolios. The Universal Signal returns have been benchmarked to a custom blend of 60% MSCI World Value Return (Net) Index, 25% Bloomberg Barclays US Aggregate Bond Index, and 15% BofAML 0-3 Month T-Bill Index. The benchmark is rebalanced monthly. The international index reflects the withholding of taxes. GIPS® is a registered trademark of the CFA Institute. CFA Institute does not endorse or promote this organization, nor does it warrant the accuracy or quality of the content contained herein.