

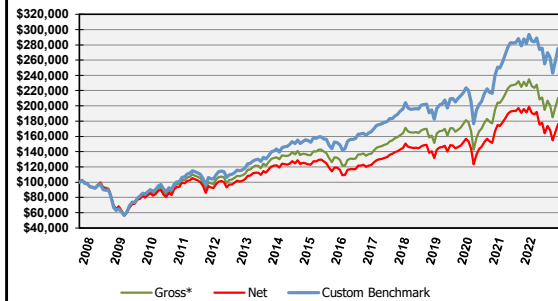
SignalPoint Asset Management, LLC is a SEC Registered Investment Advisory (RIA) firm established to focus on the needs of institutions and high net worth individuals. We offer customized portfolio management services allowing for a wide array of objectives whether the client is a pension fund, endowment, wealth manager or private investor.

Contact: Michael Orzel 1201 E. Walnut Street
Phone: (417) 869-9980 Springfield, MO 65802
Email: morzel@signalpointinvest.com

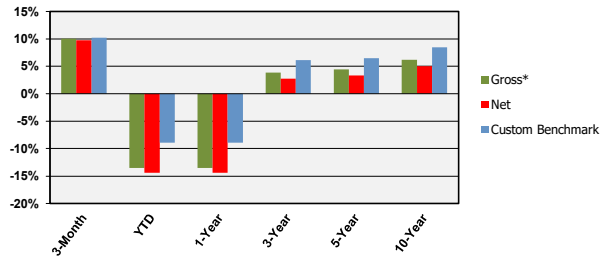
Composite Overview

The Global Signal Portfolio offers exposure to a wide range of global equities and non-correlated assets invested with SignalPoint's disciplined approach to managing risk. The result is an ETF strategy that seeks to provide diversified exposure to the domestic sectors, the top 50 S&P stocks, international regions, emerging markets, non-correlated assets and dynamic cash reserves. The portfolio is managed with SignalPoint's disciplined process, which raises and lowers cash and ETF holdings incrementally in relation to market risk. Global Signal has the objective of long-term growth.

Growth of \$100,000 Since Inception (October 1, 2007)



Trailing Returns through December 31, 2022



*Supplemental pure gross returns are gross of transaction costs.

Returns greater than one year have been annualized.

Quarterly Historical Performance (Gross & Net)

Year	1st Qtr.		2nd Qtr.		3rd Qtr.		4th Qtr.		Year-To-Date Performance		
	Gross*	Net	Gross*	Net	Gross*	Net	Gross*	Net	Global Signal	Net	Custom Benchmark
2022	(2.98%)	(3.23%)	(14.59%)	(14.81%)	(5.13%)	(5.38%)	10.05%	9.77%	(13.49%)	(14.38%)	(8.88%)
2021	5.56%	5.25%	5.39%	5.09%	(1.01%)	(1.30%)	4.49%	4.18%	15.07%	13.73%	17.11%
2020	(21.26%)	(21.46%)	19.17%	18.87%	5.16%	4.89%	14.03%	13.74%	12.51%	11.39%	12.08%
2019	10.72%	10.45%	2.02%	1.76%	(1.28%)	(1.52%)	7.64%	7.37%	20.04%	18.84%	22.64%
2018	0.89%	0.63%	(0.58%)	(0.83%)	3.48%	3.21%	(11.06%)	(11.29%)	(7.68%)	(8.63%)	(6.73%)
2017	6.35%	6.07%	2.77%	2.52%	4.88%	4.61%	3.97%	3.71%	19.19%	17.97%	17.89%
2016	0.01%	(0.27%)	1.09%	0.81%	5.33%	5.05%	(0.13%)	(0.39%)	6.34%	5.19%	11.34%
2015	3.37%	3.08%	0.07%	(0.20%)	(9.93%)	(10.18%)	2.40%	2.11%	(4.60%)	(5.66%)	(3.51%)
2014	1.49%	1.20%	3.44%	3.14%	(2.82%)	(3.09%)	0.01%	(0.27%)	2.03%	0.88%	7.89%
2013	7.54%	7.15%	(1.19%)	(1.55%)	7.16%	6.76%	4.82%	4.51%	19.35%	17.70%	20.84%
2012	10.28%	9.88%	(4.14%)	(4.50%)	5.49%	5.10%	2.49%	2.11%	14.30%	12.61%	14.11%
2011	3.76%	3.38%	0.27%	(0.10%)	(15.85%)	(16.16%)	7.89%	7.50%	(5.56%)	(6.93%)	(2.28%)
2010	4.42%	4.04%	(8.70%)	(9.03%)	12.62%	12.21%	9.81%	9.42%	17.90%	16.20%	17.55%
2009	(10.55%)	(10.72%)	18.68%	18.41%	15.36%	14.99%	4.06%	3.68%	27.43%	26.03%	39.28%
2008	(5.52%)	(5.87%)	0.90%	0.59%	(11.47%)	(11.75%)	(17.30%)	(17.30%)	(30.20%)	(30.90%)	(33.61%)
2007							(1.73%)	(2.00%)		(2.00%)	(2.22%)

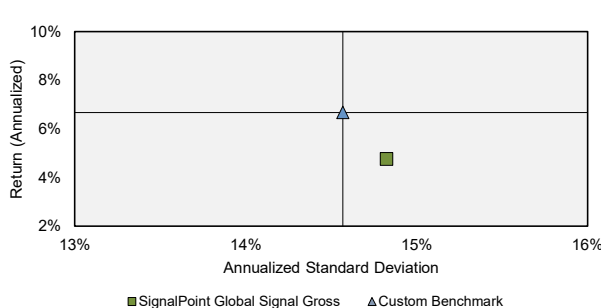
Key Statistics

	Gross	Custom Benchmark	Comparison to Custom Benchmark	
Annualized Return	4.76%	6.67%	R squared	0.97
Annualized Std Dev	14.82%	14.57%	Beta	1.00
Sharpe	0.34	0.47	Jensen Alpha	-0.15%
Max Drawdown	(44.42%)	(45.32%)	Tracking Error	2.69%
Qtrs In Max Drawdown	5.3	5.3	Information Ratio	-0.71
Qtrs To Recover	8.0	7.3		

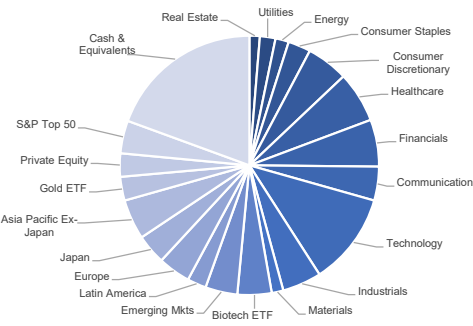
Period-to-Date Relative Performance

	Gross*	Net	Custom Benchmark
3-Month	10.05%	9.77%	10.20%
YTD	(13.49%)	(14.38%)	(8.88%)
1-Year	(13.49%)	(14.38%)	(8.88%)
3-Year	3.85%	2.75%	6.15%
5-Year	4.42%	3.33%	6.47%
10-Year	6.22%	5.05%	8.49%

Annualized Risk vs. Return



Sector Allocations as of December 31, 2022



SignalPoint Asset Management, LLC ("SignalPoint") is a SEC registered investment adviser. SignalPoint claims compliance with the Global Investment Performance Standards (GIPS®). A GIPS Report is available upon request using the contact information at the top-right of this report. The Global Signal composite includes all similarly managed discretionary portfolios that invest in sector and geographic based equity ETFs intending to provide long-term capital appreciation from a well-diversified strategy. The Global Signal strategy allows for ETF based equity exposure domestic markets and to the international markets. In addition, there will be limited exposure to ETFs that may hold non-correlated assets. Portfolios typically have 16 to 20 different ETF holdings in addition to cash reserves. The Global Signal Composite creation and inception date are October 1, 2008. Performance shown represents total returns that include income, dividends, realized and unrealized gains and losses. Gross of Fee returns are presented before the deduction of management fees. Net of Fee performance returns are reduced by actual management fees and bundled fees, which include transaction expenses, for applicable portfolios. All dividends are allocated to the cash reserve in the respective portfolios. Past performance is not indicative of future results. The U.S. Dollar is the currency used to express performance. The custom benchmark is comprised of 60% S&P 500 Equal-Weight (EWI) Total Return Index; 20% International indices (25% MSCI Europe Net; 45% MSCI Asia Pacific Net; 15% S&P Latin America 40 TR; and 15% MSCI Emerging Markets Index); 15% BofAML 0-3 Month T-Bill Index; and 5% LBMA Gold Index and rebalanced monthly. GIPS® is a registered trademark of the CFA Institute. CFA Institute does not endorse or promote this organization, nor does it warrant the accuracy or quality of the content contained herein.