

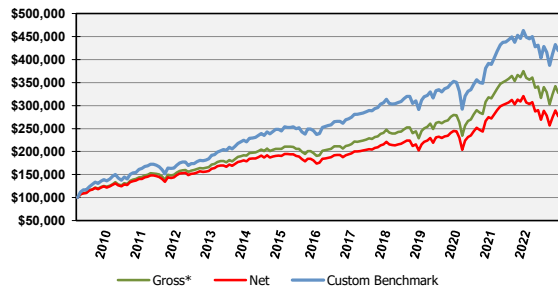
SignalPoint Asset Management, LLC is a SEC Registered Investment Advisory (RIA) firm established to focus on the needs of institutions and high net worth individuals. We offer customized portfolio management services allowing for a wide array of objectives whether the client is a pension fund, endowment, wealth manager or private investor.

Contact: Michael Orzel 1201 E. Walnut Street
Phone: (417) 869-9980
Email: morzel@signalpointinvest.com Springfield, MO 65802

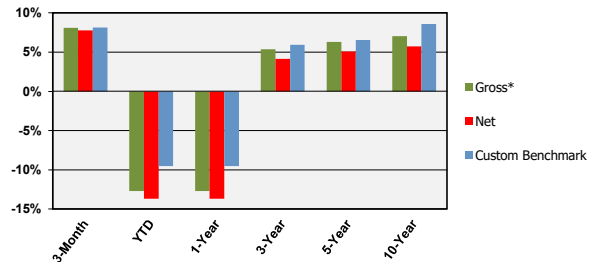
Composite Overview

The Balanced Point Portfolio offers exposure to US equity and fixed income ETFs along with SignalPoint's disciplined approach to managing risk. The result is a strategy that seeks to provide diversified exposure to more than 500 equities across ten domestic sectors, select fixed income ETFs ranging in credit quality and maturity and a dynamic cash reserves. SignalPoint's disciplined approach then raises and lowers cash and ETF holdings incrementally in relation to market risk. Balanced Point has the objective of long-term growth and current income.

Growth of \$100,000 Since Inception (April 1, 2009)



Trailing Returns through December 31, 2022



*Supplemental pure gross returns are gross of transaction costs.

Returns greater than one year have been annualized.

Quarterly Historical Performance (Gross & Net)

Year	1st Qtr.		2nd Qtr.		3rd Qtr.		4th Qtr.		Year-To-Date Performance		
	Gross*	Net	Gross*	Net	Gross*	Net	Gross*	Net	Balanced Point	Custom Benchmark	
2022	(3.84%)	(4.11%)	(12.15%)	(12.40%)	(4.40%)	(4.66%)	8.07%	7.78%	(12.73%)	(13.69%)	(9.51%)
2021	5.82%	5.50%	5.23%	4.91%	(0.15%)	(0.45%)	6.14%	5.82%	18.02%	16.60%	18.28%
2020	(16.45%)	(16.70%)	15.51%	15.17%	5.33%	5.02%	11.67%	11.33%	13.51%	12.16%	10.99%
2019	10.80%	10.46%	3.44%	3.14%	1.11%	0.81%	5.49%	5.18%	22.24%	20.81%	20.90%
2018	(0.61%)	(0.91%)	1.71%	1.41%	3.57%	3.27%	(9.21%)	(9.48%)	(4.95%)	(6.07%)	(4.50%)
2017	3.60%	3.29%	2.09%	1.78%	2.43%	2.12%	4.11%	3.80%	12.79%	11.44%	12.89%
2016	2.17%	1.88%	2.13%	1.84%	2.84%	2.55%	0.98%	0.64%	8.36%	7.08%	10.23%
2015	2.30%	2.00%	(2.09%)	(2.37%)	(5.67%)	(5.94%)	1.36%	1.08%	(4.23%)	(5.33%)	(1.14%)
2014	2.85%	2.54%	3.62%	3.32%	(1.76%)	(2.05%)	2.38%	2.09%	7.18%	5.94%	10.58%
2013	6.70%	6.37%	(0.37%)	(0.69%)	3.81%	3.45%	4.67%	4.34%	15.51%	14.01%	21.95%
2012	6.39%	6.09%	(0.50%)	(0.82%)	3.86%	3.53%	1.07%	0.74%	11.13%	9.74%	12.26%
2011	3.76%	3.47%	1.07%	0.78%	(8.46%)	(8.73%)	7.97%	7.67%	3.65%	2.48%	1.89%
2010	3.58%	3.17%	(2.74%)	(3.11%)	7.88%	7.46%	5.89%	5.50%	15.09%	13.33%	15.79%
2009			10.80%	10.48%	10.13%	9.77%	2.83%	2.42%	25.48%	24.21%	39.17%

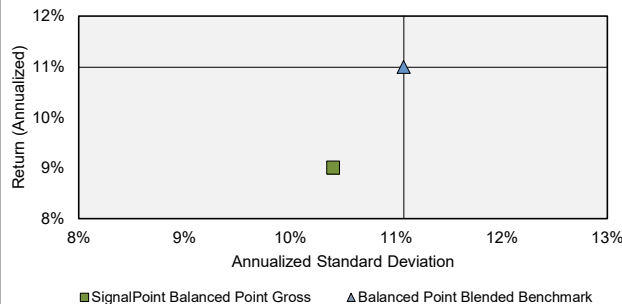
Key Statistics

	Gross	Custom Benchmark	Comparison to Custom Benchmark	
Annualized Return	9.01%	10.99%	R squared	0.94
Annualized Std Dev	10.41%	11.07%	Beta	0.91
Sharpe	0.83	0.95	Jensen Alpha	-0.08%
Max Drawdown	(19.24%)	(17.22%)	Tracking Error	2.73%
Qtrs In Max Drawdown	3.0	1.0	Information Ratio	-0.73
Qtrs To Recover	N/A	1.7		

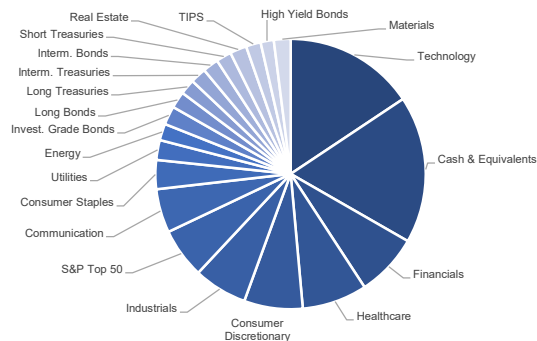
Period-to-Date Relative Performance

	Gross*	Net	Custom Benchmark
3-Month	8.07%	7.78%	8.13%
YTD	(12.73%)	(13.69%)	(9.51%)
1-Year	(12.73%)	(13.69%)	(9.51%)
3-Year	5.35%	4.12%	5.91%
5-Year	6.32%	5.07%	6.53%
10-Year	7.01%	5.74%	8.57%

Annualized Risk vs. Return



Sector Allocations as of December 31, 2022



SignalPoint Asset Management, LLC ("SignalPoint") is a SEC registered investment adviser. SignalPoint claims compliance with the Global Investment Performance Standards (GIPS®). A GIPS Report is available upon request using the contact information at the top-right of this report. Balanced Point Composite includes all portfolios that invest in a blend of domestic equity and fixed income exchanged traded funds (ETFs) intending to provide long-term capital preservation from a well-diversified strategy. Portfolios typically have 18 to 20 different ETF holdings in addition to cash reserves. Performance shown represents total returns that include income, dividends, realized and unrealized gains and losses. Gross of Fee returns are presented before the deduction of management fees. Net of Fee performance returns are reduced by actual management fees and bundled fees, which include transaction fees, for applicable portfolios. All dividends are allocated to the cash reserve in the respective portfolios. The Balanced Point Composite was created on April 1, 2009, and the inception date is April 1, 2009. Past performance is not indicative of future results. The custom benchmark is a blend of 65% S&P Equal Weight (EWI) Total Return Index, 20% Bloomberg Barclays US Aggregate Bond Index, and 15% BofAML 0-3 Month T-Bill Index. The benchmark is rebalanced monthly. The U.S. Dollar is the currency used to express performance. GIPS® is a registered trademark of the CFA Institute. CFA Institute does not endorse or promote this organization, nor does it warrant the accuracy or quality of the content contained herein.