

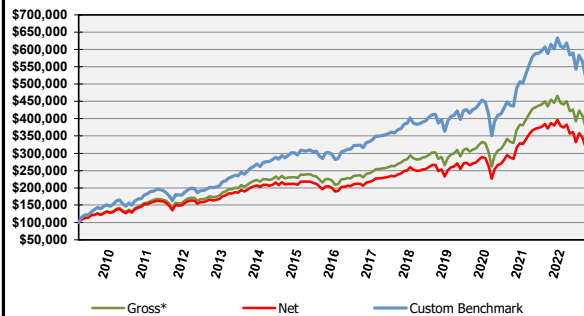
SignalPoint Asset Management, LLC is a SEC Registered Investment Advisory (RIA) firm established to focus on the needs of institutions and high net worth individuals. We offer customized portfolio management services allowing for a wide array of objectives whether the client is a pension fund, endowment, wealth manager or private investor.

Contact: Michael Orzel  
Phone: (417) 869-9980 1201 E. Walnut Street  
Email: [morzel@signalpointinvest.com](mailto:morzel@signalpointinvest.com) Springfield, MO 65802

**Composite Overview**

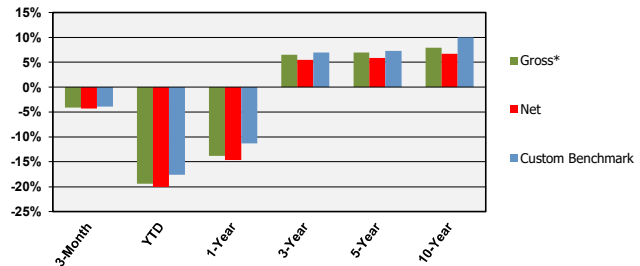
The Signal 10 Portfolio offers exposure to domestic equity ETFs along with SignalPoint's disciplined approach to managing risk. The result is a strategy that seeks to provide broad exposure to over 500 equities across domestic sectors and a dynamic cash reserves. The portfolio is managed with SignalPoint's disciplined process, which raises and lowers cash and ETF holdings incrementally in relation to market risk. Signal 10 has the objective of long-term growth.

**Growth of \$100,000 Since Inception (April 1, 2009)**



\*Supplemental pure gross returns are gross of transaction costs.

**Trailing Returns through September 30, 2022**



Returns greater than one year have been annualized.

**Quarterly Historical Performance (Gross & Net)**

Year	1st Qtr.		2nd Qtr.		3rd Qtr.		4th Qtr.	
	Gross*	Net	Gross*	Net	Gross*	Net	Gross*	Net
2022	(3.33%)	(3.56%)	(13.10%)	(13.32%)	(4.07%)	(4.30%)		
2021	8.14%	7.87%	5.68%	5.40%	(0.27%)	(0.51%)	6.96%	6.69%
2020	(21.47%)	(21.67%)	19.57%	19.27%	6.72%	6.45%	14.69%	14.40%
2019	12.73%	12.45%	3.50%	3.24%	0.36%	0.10%	7.03%	6.76%
2018	(0.14%)	(0.39%)	2.40%	2.15%	4.63%	4.37%	(12.15%)	(12.37%)
2017	4.81%	4.53%	2.26%	1.98%	3.35%	3.08%	5.10%	4.84%
2016	1.55%	1.23%	1.61%	1.29%	3.83%	3.53%	2.68%	2.39%
2015	3.10%	2.77%	(1.33%)	(1.65%)	(8.15%)	(8.44%)	2.24%	1.91%
2014	1.09%	0.74%	3.69%	3.37%	(2.48%)	(2.81%)	1.46%	1.13%
2013	10.00%	9.57%	1.53%	1.10%	5.13%	4.77%	6.65%	6.28%
2012	9.75%	9.33%	(2.73%)	(3.10%)	5.15%	4.73%	1.41%	1.02%
2011	5.58%	5.16%	0.51%	0.11%	(15.35%)	(15.68%)	11.15%	10.73%
2010	4.23%	3.89%	(6.70%)	(7.03%)	9.65%	9.23%	10.53%	10.10%
2009	0.00%	0.00%	14.75%	14.33%	10.36%	9.98%	4.69%	4.29%

**Year-To-Date Performance**

Signal 10	Signal 10		Custom Benchmark
	Gross*	Net	
	(1.76%)	(3.45%)	2.85%
	21.90%	20.68%	24.84%
	14.93%	13.77%	11.59%
	25.33%	24.08%	24.97%
	(6.00%)	(6.93%)	(6.13%)
	16.43%	15.21%	16.03%
	10.01%	8.70%	12.61%
	(4.46%)	(5.69%)	(1.78%)
	3.71%	2.36%	12.26%
	25.22%	23.35%	30.13%
	13.84%	12.08%	14.92%
	(0.14%)	(1.71%)	0.14%
	17.86%	16.16%	18.66%
	32.58%	31.13%	51.19%

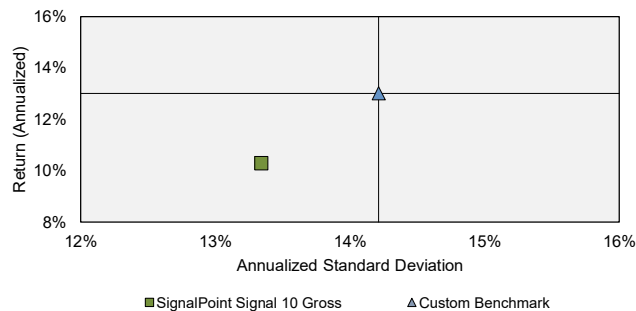
**Key Statistics**

	Gross	Custom Benchmark	Comparison to Custom Benchmark	
Annualized Return	10.30%	13.01%	R squared	0.95
Annualized Std Dev	13.34%	14.21%	Beta	0.92
Sharpe	0.76	0.90	Jensen Alpha	(0.12%)
Max Drawdown	(21.47%)	(22.88%)	Tracking Error	3.24%
Qtrs Max Drawdown	1.0	1.0	Information Ratio	-0.84
Qtrs. To Recover	1.7	2.7		

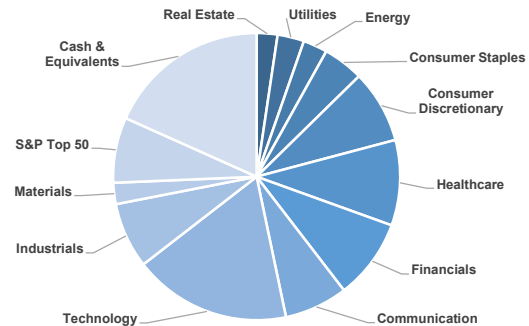
**Period-to-Date Relative Performance**

	Gross*	Net	Custom Benchmark
3-Month	(4.07%)	(4.30%)	(3.91%)
YTD	(19.41%)	(20.00%)	(17.61%)
1-Year	(13.80%)	(14.64%)	(11.30%)
3-Year	6.52%	5.46%	6.93%
5-Year	6.93%	5.87%	7.23%
10-Year	7.92%	6.69%	9.96%

**Annualized Risk vs. Return**



**Sector Allocations as of September 30, 2022**



SignalPoint Asset Management, LLC ("SignalPoint") is a SEC registered investment adviser. SignalPoint claims compliance with the Global Investment Performance Standards (GIPS®). A GIPS Report is available upon request using the contact information at the top-right of this report. Signal 10 Composite includes all portfolios that invest in at least a 90% target allocation to the Signal 10 model portfolio, a sector driven portfolio of domestic equity ETFs with the goal of providing long-term capital appreciation from a well-diversified strategy. Portfolios typically have nine to twelve different ETF holdings, in addition to cash reserves. The Signal 10 Composite creation and inception date are April 1, 2009. Performance shown represents total returns that include income, dividends, realized and unrealized gains and losses. Gross of Fee returns are presented before the deduction of management fees. Net of Fee performance returns are reduced by actual management fees and bundled fees, which include transaction expenses, for applicable portfolios. All dividends are allocated to the cash reserve in the respective portfolios. Past performance is not indicative of future results. The U.S. Dollar is the currency used to express performance. The Signal 10 returns have been benchmarked to a custom benchmark comprised of 85% S&P 500 Equal-Weight (EWI) Total Return Index and 15% BofAML 0-3 Month T-Bill Index and rebalanced monthly. GIPS® is a registered trademark of the CFA Institute. CFA Institute does not endorse or promote this organization, nor does it warrant the accuracy or quality of the content contained herein.